

VEHICLE PARKING LEGEND

PRIVATE PARKING SPACE

ROADSIDE GUEST/VISITOR PARKING SPACE

ROADSIDE GUEST/VISITOR DISABLED PARKING SPACE

PARKING RELATED TO CRECHE/COMMUNITY CENTRE INCL 1NO. EV SPACE

DROP OFF SPACE

BICYCLE BIKE PARKING LEGEND

PRIVATE COVERED PARKING SPACE 1NO. SPACE

COMMUNAL COVERED PARKING SPACE 4NO. SPACES

PARKING BAY FOR PUBLIC USE

NOTE: LEGEND RELATES TO APARTMENTS OR PUBLIC AREAS ONLY. DWELLINGS HAVE AVAILABLE SPACE IN REAR GARDENS FOR BICYCLE STORAGE

REFUSE STORAGE LOCATIONS

PRIVATE COVERED DOMESTIC BIN STORAGE

COMMUNAL COVERED BIN STORAGE

PRIVATE COVERED CRECHE BIN STORAGE

NOTE: LEGEND RELATES TO APARTMENTS AND DWELLINGS WITH NO SIDE ACCESS ONLY. PINK SYMBOL IS EXAGGERATED SCALE ON PLAN FOR CLARITY ON DRAWING. DWELLINGS WITH SIDE ACCESS HAVE AVAILABLE SPACE IN REAR GARDENS FOR REFUSE STORAGE

Parking Quality Assessment

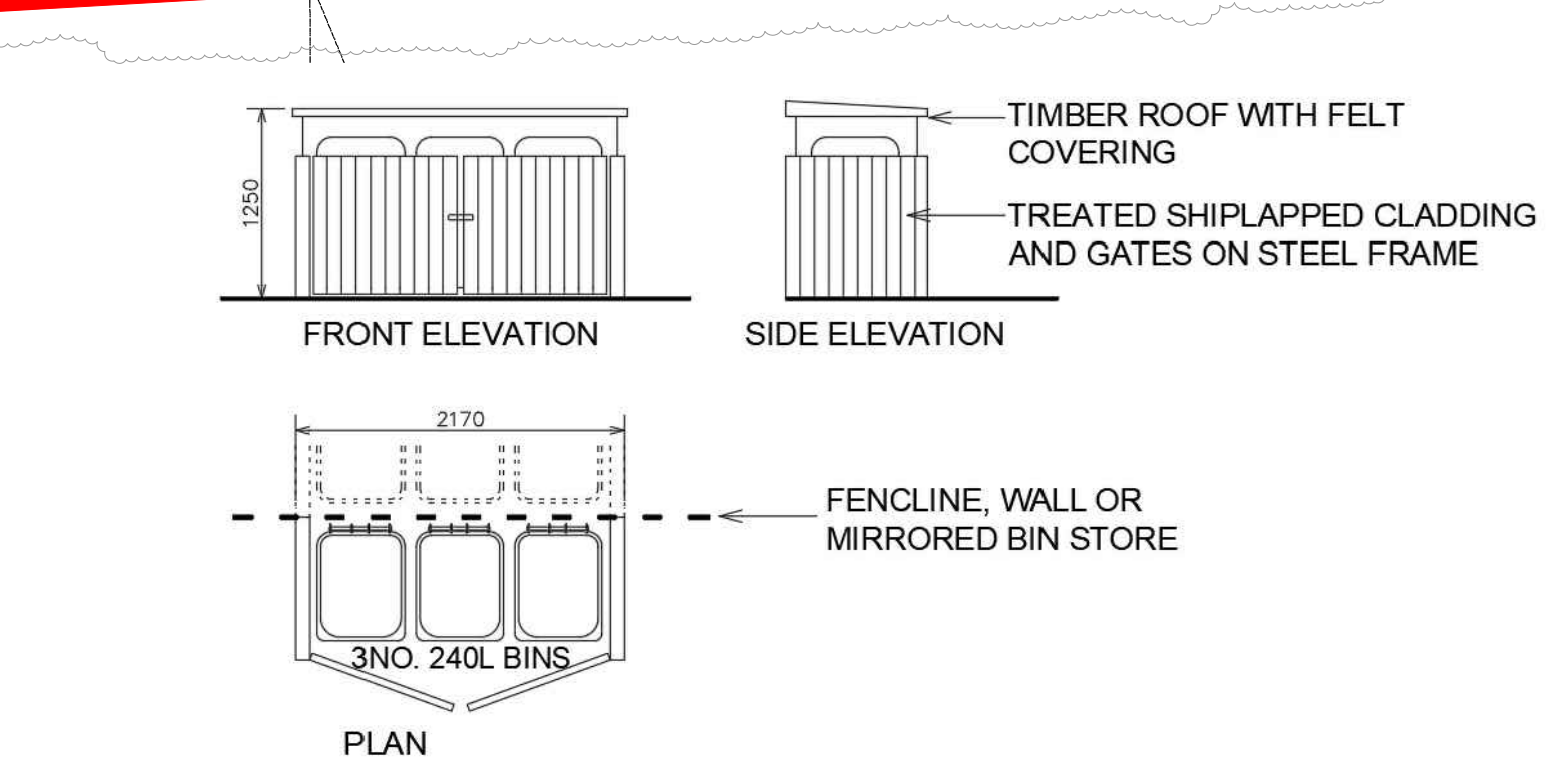
Private Car Parking Spaces	
Quantity of type	Spaces per Dwelling
4 Bedroom Dwellings	22
3 Bedroom Dwellings	94
2 Bedroom Dwellings	96
2 Bedroom Duplex Apartments	26
1 Bedroom Duplex Apartments	26
1 Bedroom Roadside Apartments	8
Total Units	272
Total Private Spaces	
354	

Roadside Car Parking Spaces	
Total Public Spaces	10
Total Roadside 'Residents Only Spaces'	15
Total Creche/Community Spaces	7
Total Roadside Spaces	32

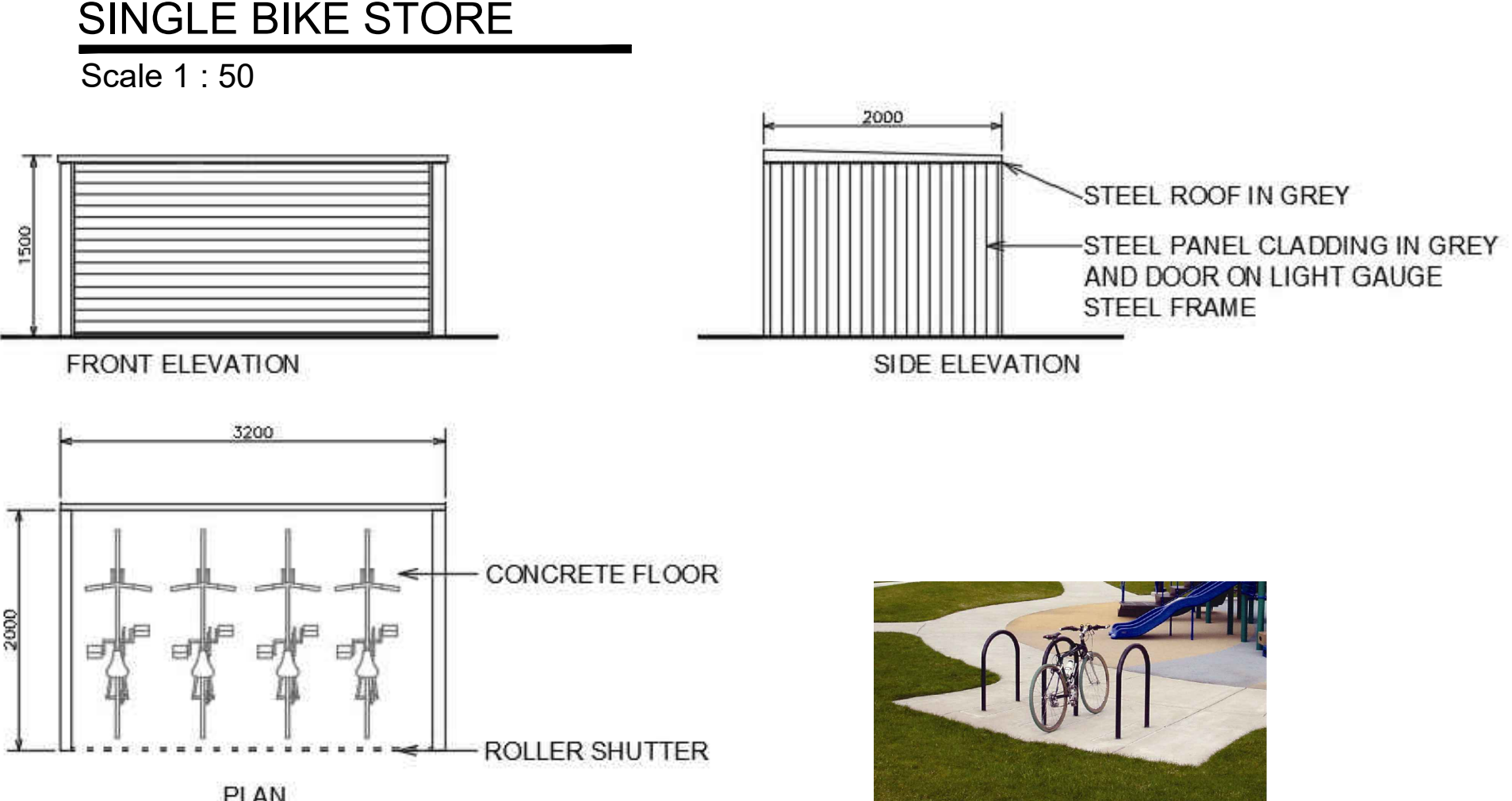
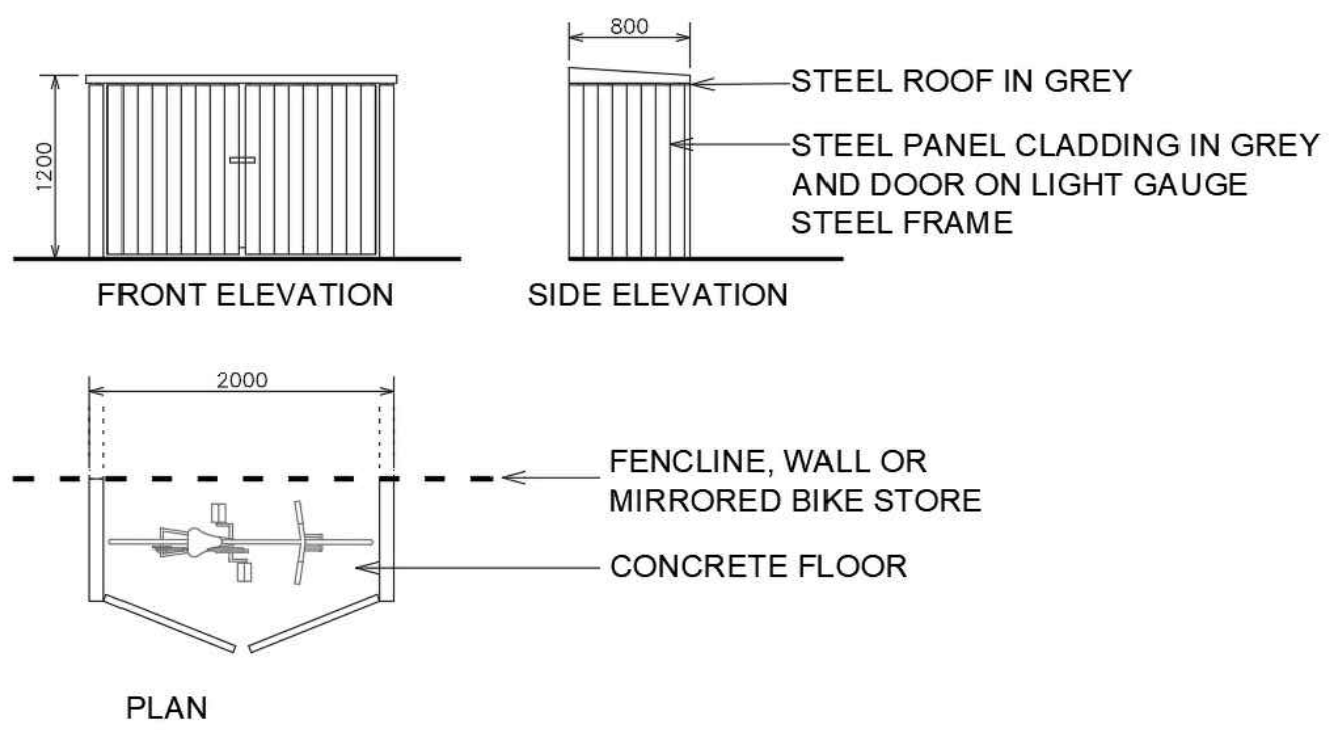
Private Bicycle Parking Spaces	
Quantity of type	Spaces per Dwelling
4 Bedroom Dwellings	22
3 Bedroom Dwellings	94
2 Bedroom Dwellings	96
2 Bedroom Duplex Apartments	26
1 Bedroom Duplex Apartments	26
1 Bedroom Roadside Apartments	8
Total Units	272
Total Private Spaces	
388	

Public Bicycle Parking Spaces	
Total Public Spaces	44

NOTE:
FURTHER LANDSCAPING DETAILS ARE
OUTLINED ON DRAWINGS PREPARED BY
FOREST BIRD DESIGN AND BOK ENGINEERING



PART SITE PLAN (SOUTHERN SIDE) - PARKING AND REFUSE
Scale 1 : 500



PUBLIC BIKE PARKING

Notes:

- 1. This drawing is for the purpose of the stage indicated only. - If in doubt ask.
- 2. Do not scale, figured dimensions only to be taken.
- 3. Engineer/Architect to be informed of any discrepancies before work proceeds.
- 4. Contractor to check all dimensions and conditions on site before commencing works.
- 5. Drawing to be read in conjunction with current Building Regulations.
- 6. All components and materials to be installed fully in accordance with manufacturers instructions.

Rev	Date	Description	Drawn	Chk'd
A	09-10-2023	ISSUED FOR PLANNING APPLICATION	JB	BOK/GF

BRIAN O KENNEDY & ASSOCIATES LTD

Engineers & Architects

Shannon House,
Church Road,
Douglas,
Co Cork

Tel: 021-4899854
Fax: 021-4899854
Email: info@bok.ie
Web: www.bok.ie

ENGINEERING | ARCHITECTURE | ASSIGNED CERTIFIERS
DRIVE CERTIFICATES | DAC | PSDP | CONSERVATION

GENERAL NOTE:
This drawing is the property of Brian O'Kennedy & Associates.
Copyright is reserved. The drawing shall not be copied, reproduced or
otherwise used without the consent of Brian O'Kennedy & Associates.

Drawing Status: LRD PLANNING APPLICATION	
Client: CASTLE ROCK HOMES MIDDLETON LTD.	
Project: RESIDENTIAL DEVELOPMENT - BROOMFIELD MIDDLETON	Date: 14-09-23
Drawing: PROPOSED PART SITE LAYOUT PLAN SOUTHERN - PARKING AND REFUSE	Scale: 1:500 @ A1
Drawing number: 22/6732-P-1111	Rev: A Drawn: JB GF