






VEHICLE PARKING LEGEND

PRIVATE PARKING SPACE


ROADSIDE GUEST/VISITOR PARKING SPACE


ROADSIDE GUEST/VISITOR DISABLED PARKING SPACE

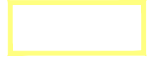
PARKING RELATED TO CRECHE/COMMUNITY CENTRE INCL 1NO. EV SPACE

DROP OFF SPACE

BICYCLE BIKE PARKING LEGEND


PRIVATE COVERED PARKING SPACE 1NO. SPACE


COMMUNAL COVERED PARKING SPACE 4NO. SPACES


PARKING BAY FOR PUBLIC USE

NOTE: LEGEND RELATES TO APARTMENTS OR PUBLIC AREAS ONLY. DWELLINGS HAVE AVAILABLE SPACE IN REAR GARDENS FOR BICYCLE STORAGE

REFUSE STORAGE LOCATIONS

PRIVATE COVERED DOMESTIC BIN STORAGE

COMMUNAL COVERED BIN STORAGE

PRIVATE COVERED CRECHE BIN STORAGE

NOTE: LEGEND RELATES TO APARTMENTS AND DWELLINGS WITH NO SIDE ACCESS ONLY. PINK SYMBOL IS EXAGGERATED SCALE ON PLAN FOR CLARITY ON DRAWING. DWELLINGS WITH SIDE ACCESS HAVE AVAILABLE SPACE IN REAR GARDENS FOR REFUSE STORAGE

PARKING QUALITY ASSESSMENT

Private Car Parking Spaces

	Quantity of type	Spaces per Dwelling	Total
4 Bedroom Dwellings	18	2	36
3 Bedroom Dwellings	96	2	192
2 Bedroom Dwellings	98	1	98
2 Bedroom Duplex Apartments	24	1	24
1 Bedroom Duplex Apartments	24	0	0
1 Bedroom Roadside Apartments	8	0	0
Total Units	268	Total Private Spaces	350

Roadside Car Parking Spaces

	Total Public Spaces
Total Roadside 'Residents Only Spaces'	9
Total Creche/Community Spaces	15
Total Roadside Spaces	7
	32

Private Bicycle Parking Spaces

	Quantity of type	Spaces per Dwelling	Total
4 Bedroom Dwellings	18	2 (more possible)	36
3 Bedroom Dwellings	96	2 (more possible)	192
2 Bedroom Dwellings	98	1 (more possible)	98
2 Bedroom Duplex Apartments	24	1 (more possible)	24
1 Bedroom Duplex Apartments	24	1	24
1 Bedroom Roadside Apartments	8	1	8
Total Units	268	Total Private Spaces	382

Public Bicycle Parking Spaces

	Total Public Spaces
	44

NOTE:  
FURTHER LANDSCAPING DETAILS ARE OUTLINED ON DRAWINGS PREPARED BY FOREST BIRD DESIGN AND BOK ENGINEERING

PARKING QUALITY ASSESSMENT

Private Car Parking Spaces

	Quantity of type	Spaces per Dwelling	Total
4 Bedroom Dwellings	18	2	36
3 Bedroom Dwellings	96	2	192
2 Bedroom Dwellings	98	1	98
2 Bedroom Duplex Apartments	24	1	24
1 Bedroom Duplex Apartments	24	0	0
1 Bedroom Roadside Apartments	8	0	0
Total Units	268		350

Roadside Car Parking Spaces

Total Public Spaces	9
Total Roadside 'Residents Only Spaces'	15
Total Creche/Community Spaces	7
Total Roadside Spaces	32

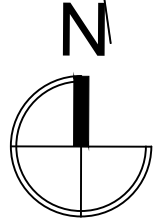
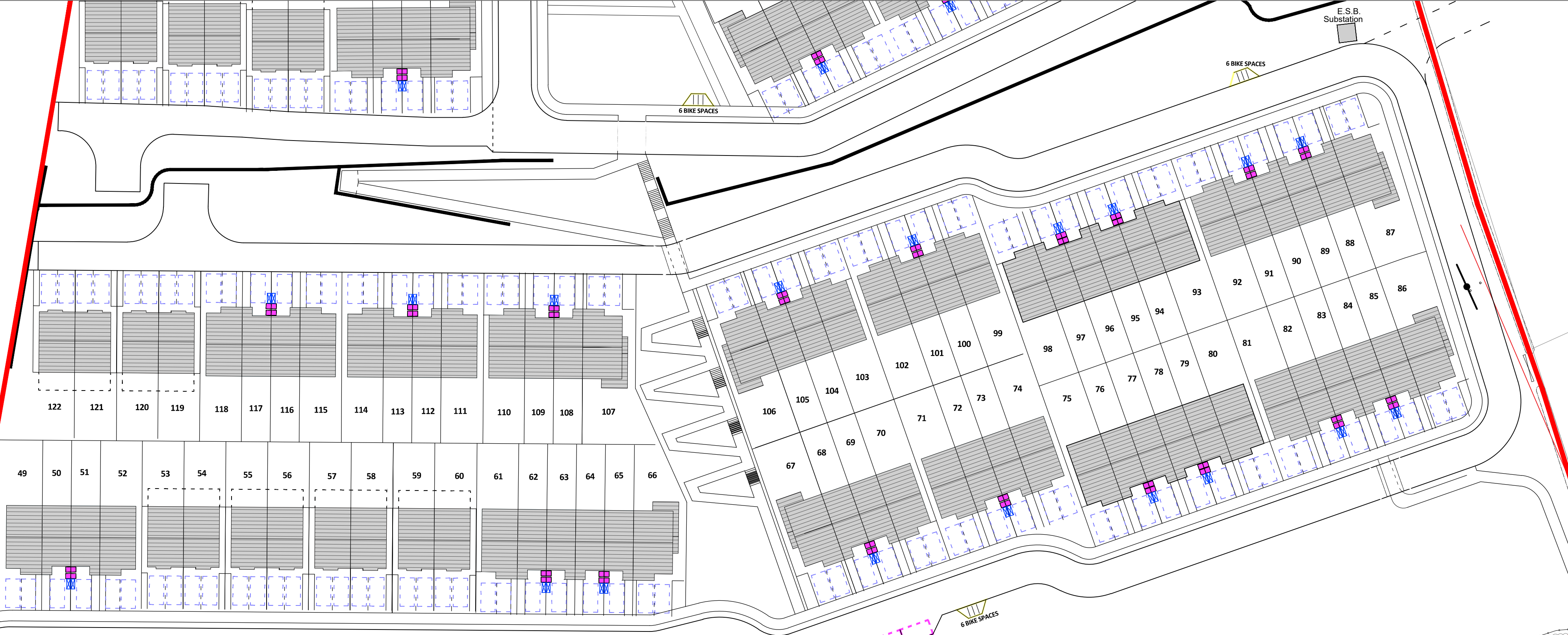
Private Bicycle Parking Spaces

	Quantity of type	Spaces per Dwelling	Total
4 Bedroom Dwellings	18	2 (more possible)	36
3 Bedroom Dwellings	96	2 (more possible)	192
2 Bedroom Dwellings	98	1 (more possible)	98
2 Bedroom Duplex Apartments	24	1 (more possible)	24
1 Bedroom Duplex Apartments	24	1	24
1 Bedroom Roadside Apartments	8	1	8
Total Units	268		382

Public Bicycle Parking Spaces

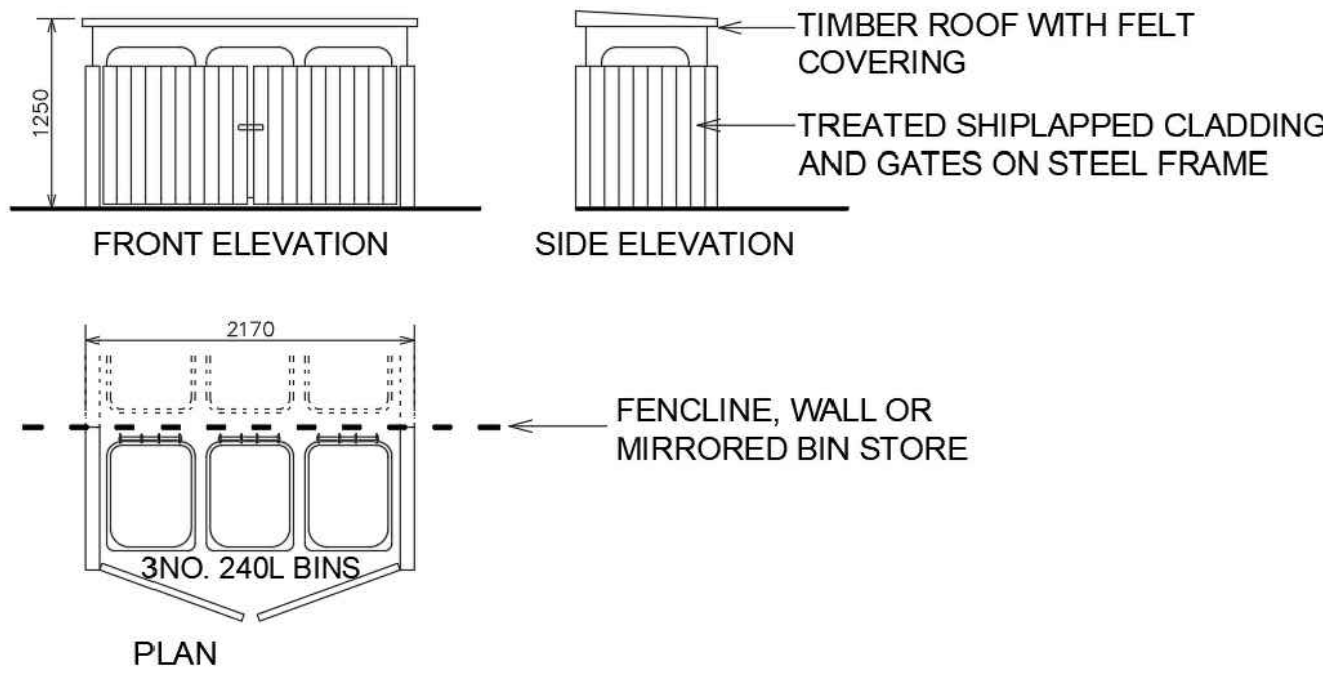
Total Public Spaces	44
---------------------	----

NOTE:  
FURTHER LANDSCAPING DETAILS ARE  
OUTLINED ON DRAWINGS PREPARED BY  
FOREST BIRD DESIGN AND BOK ENGINEERING



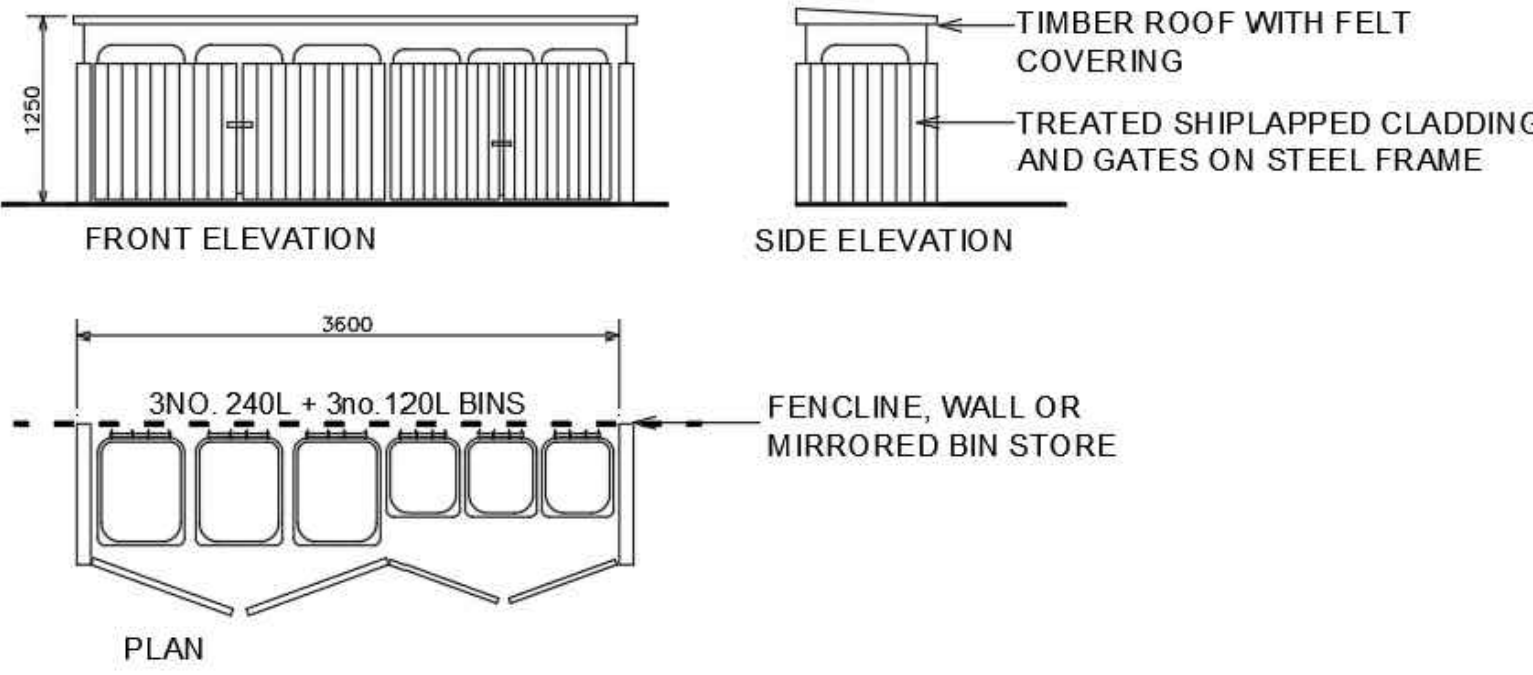
PART SITE PLAN (SOUTHERN SIDE) - PARKING AND REFUSE

Scale 1 : 500



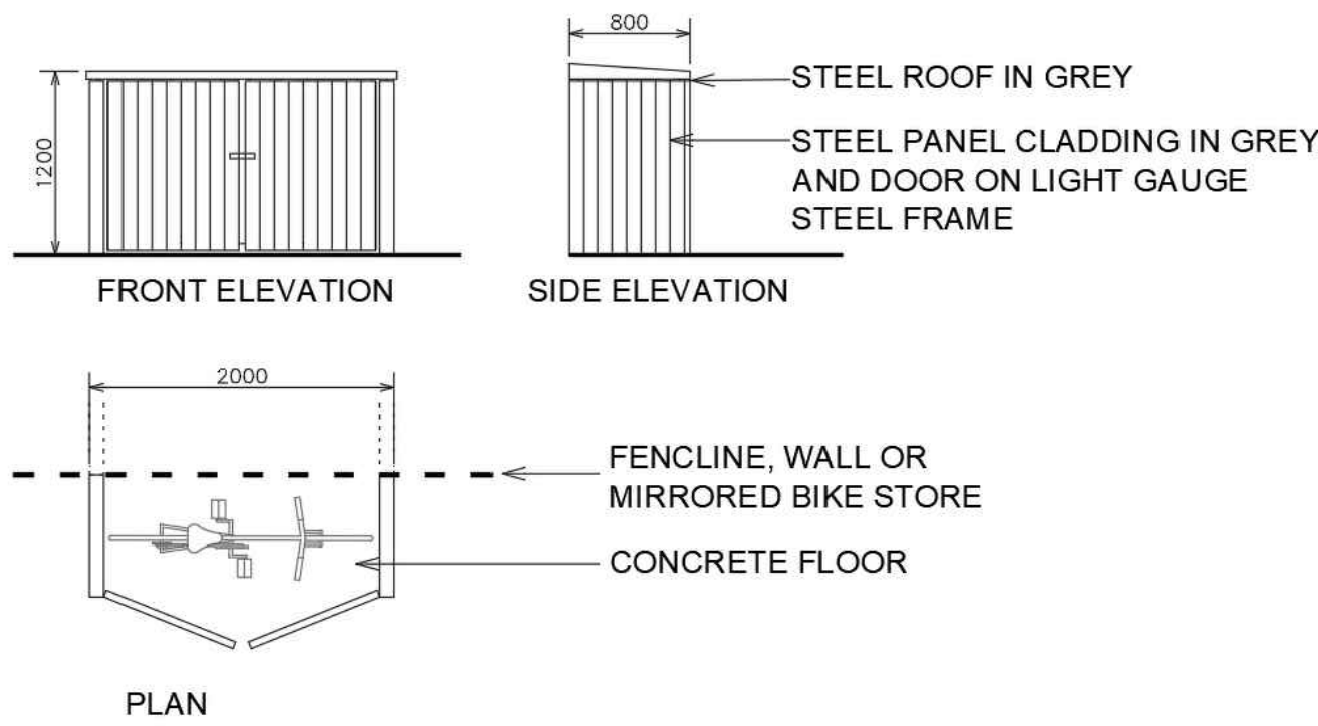
PRIVATE BIN STORE (DWELLINGS AND CRECHE)

Scale 1 : 50



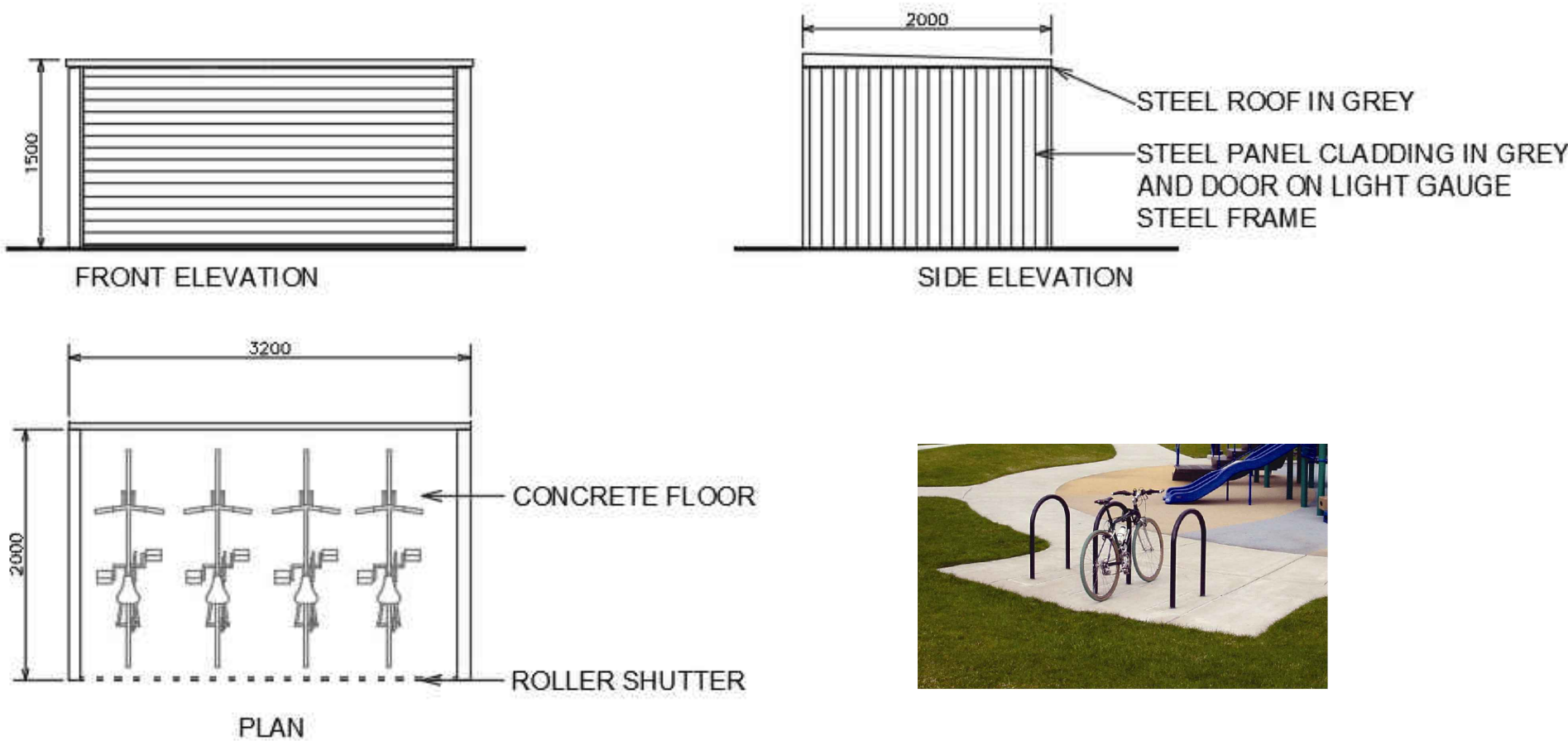
COMMUNAL DOMESTIC BIN STORE

Scale 1 : 50



SINGLE BIKE STORE

Scale 1 : 50



COMMUNAL BIKE STORE

Scale 1 : 50



PUBLIC BIKE PARKING

CastleRock Homes

Notes:

1. This drawing is for the purpose of the stage indicated only. - If in doubt ask.
2. Do not scale, figured dimensions only to be taken.
3. Engineer/Architect to be informed of any discrepancies before work proceeds.
4. Contractor to check all dimensions and conditions on site before commencing works.
5. Drawing to be read in conjunction with current Building Regulations.
6. All components and materials to be installed fully in accordance with manufacturers instructions.

Rev	Date	Description	Drawn	Chk'd
A	09-10-2023	ISSUED FOR PLANNING APPLICATION	JB	BOK/GF
B	27-02-2024	ISSUED FOR FURTHER INFORMATION	SM	BOK/GF

**BRIAN O'KENNEDY & ASSOCIATES LTD**  
ENGINEERS I ARCHITECTS

Shannon House,  
Church Road,  
Douglas,  
Co Cork

Tel: 021-4899554  
Fax: 021-4899554  
Email: info@bok.ie  
Web: www.bok.ie

ENGINEERING | ARCHITECTURE | ASSIGNED CERTIFIERS  
BREE CERTIFICATES | DAC | PSDP | CONSERVATION

GENERAL NOTE:  
This drawing is the property of Brian O'Kennedy & Associates.  
Copyright is reserved. The drawing shall not be copied, reproduced or  
otherwise used without the consent of Brian O'Kennedy & Associates.

Drawing Status:	LRD PLANNING APPLICATION
Client:	CASTLE ROCK HOMES MIDDLETON LTD.
Project:	RESIDENTIAL DEVELOPMENT - BROOMFIELD MIDDLETON
Drawing:	PROPOSED PART SITE LAYOUT PLAN SOUTHERN - PARKING AND REFUSE
Drawing number:	22/6732-P-1111
Rev:	B
Drawn/Chk'd:	JB GF