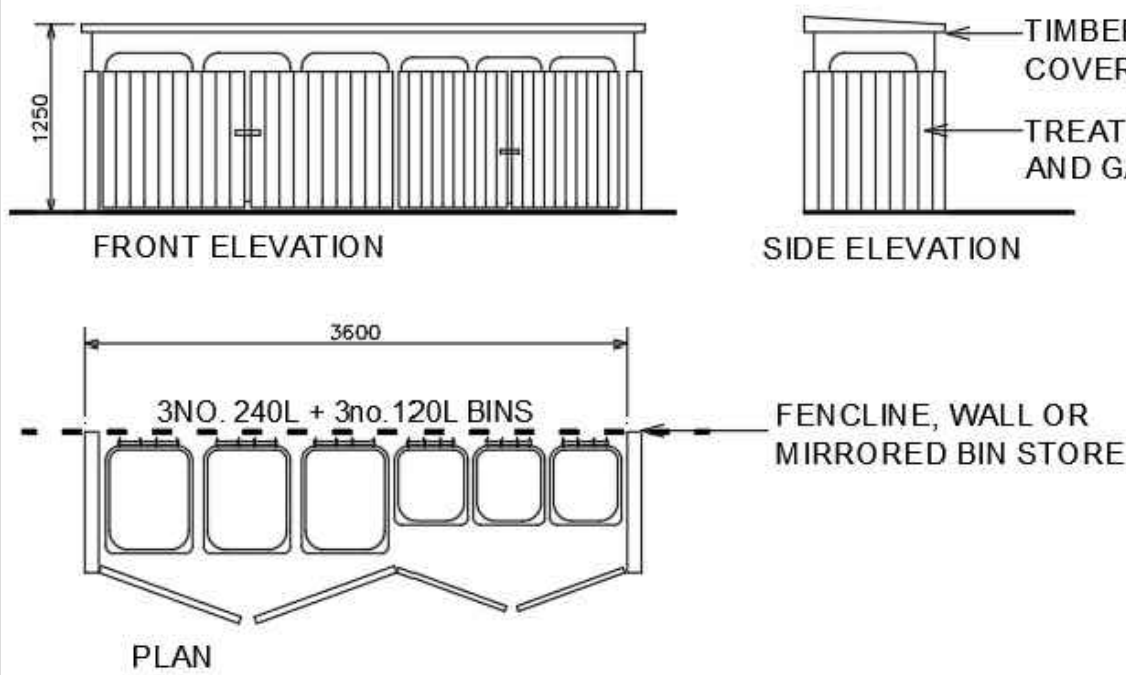


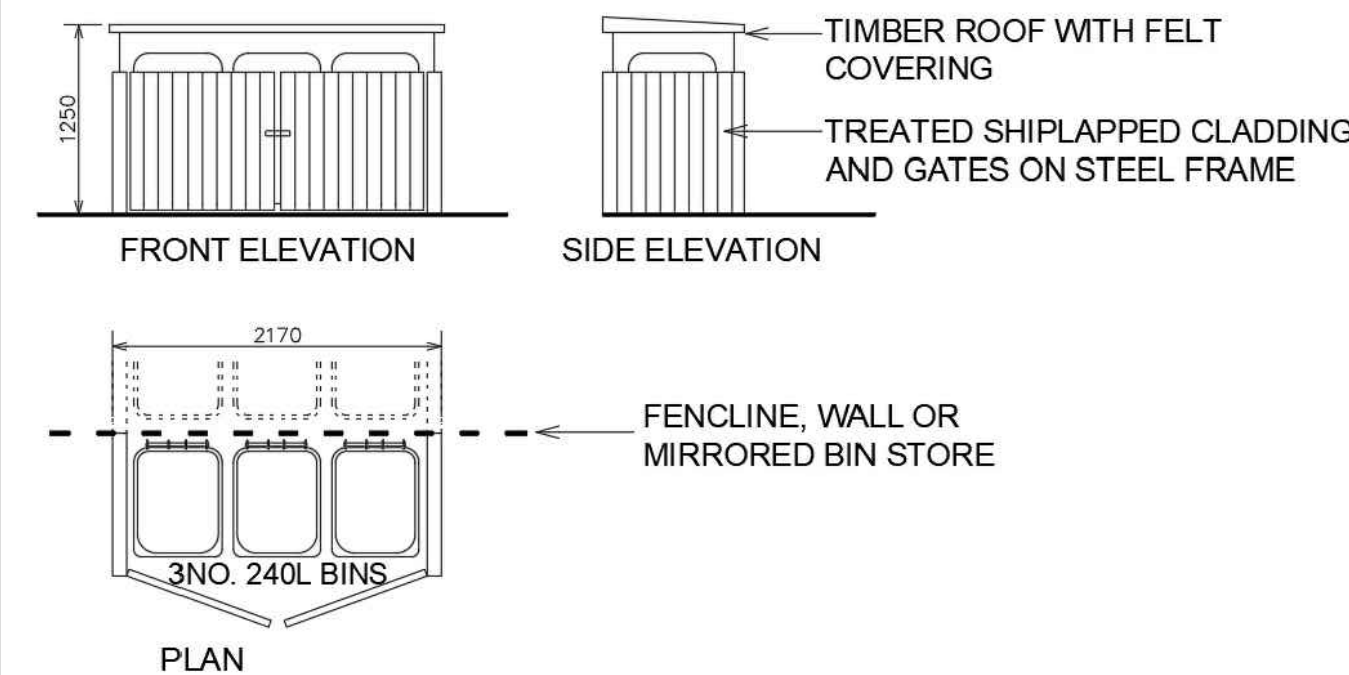
COMMUNAL DOMESTIC BIKE STORE

Scale 1 : 50



COMMUNAL DOMESTIC BIN STORE

Scale 1 : 50



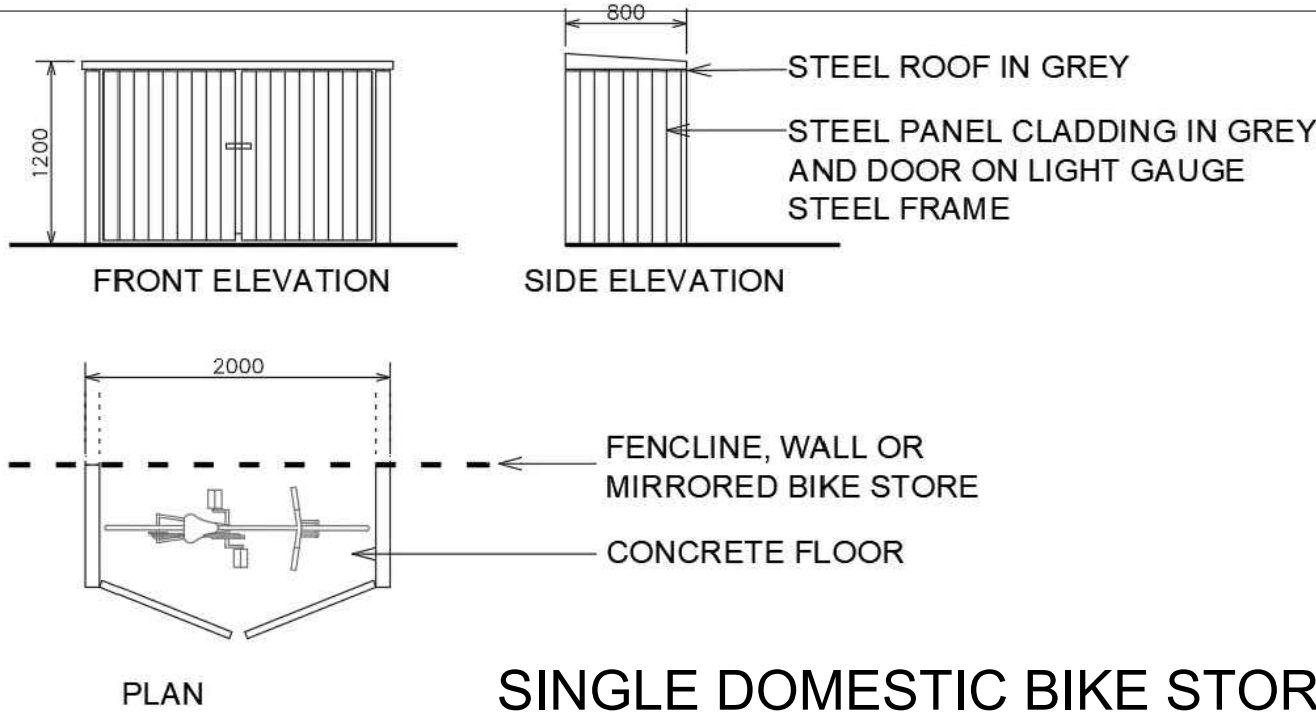
PRIVATE BIN STORE (DWELLINGS AND CRECHE)

Scale 1 : 50



PUBLIC BIKE PARKING

NOTE:
FURTHER LANDSCAPING DETAILS ARE
OUTLINED ON DRAWINGS PREPARED BY
FOREST BIRD DESIGN AND BOK ENGINEERING



SINGLE DOMESTIC BIKE STORE

Scale 1 : 50

PARKING QUALITY ASSESSMENT

Private Car Parking Spaces

	Quantity of type	Spaces per Dwelling	Total
4 Bedroom Dwellings	18	2	36
3 Bedroom Dwellings	96	2	192
2 Bedroom Dwellings	98	1	98
2 Bedroom Duplex Apartments	24	1	24
1 Bedroom Duplex Apartments	24	0	0
1 Bedroom Roadside Apartments	8	0	0
Total Units	268		350

Roadside Car Parking Spaces

Total Public Spaces	9
Total Roadside 'Residents Only Spaces'	15
Total Creche/Community Spaces	7
Total Roadside Spaces	32

Private Bicycle Parking Spaces

	Quantity of type	Spaces per Dwelling	Total
4 Bedroom Dwellings	18	2 (more possible)	36
3 Bedroom Dwellings	96	2 (more possible)	192
2 Bedroom Dwellings	98	1 (more possible)	98
2 Bedroom Duplex Apartments	24	1 (more possible)	24
1 Bedroom Duplex Apartments	24	1	24
1 Bedroom Roadside Apartments	8	1	8
Total Units	268		382

Public Bicycle Parking Spaces

Total Public Spaces	44
---------------------	----

PART SITE PLAN (NORTHERN SIDE) - PARKING AND REFUSE

Scale 1 : 500

VEHICLE PARKING LEGEND

- PRIVATE PARKING SPACE
- ROADSIDE GUEST/VISITOR PARKING SPACE
- ROADSIDE GUEST/VISITOR DISABLED PARKING SPACE
- PARKING RELATED TO CRECHE/COMMUNITY CENTRE
- DROP OFF SPACE

BICYCLE BIKE PARKING LEGEND

- PRIVATE COVERED PARKING SPACE
1NO. SPACE
- COMMUNAL COVERED PARKING SPACE
4NO. SPACES
- PARKING BAY FOR PUBLIC USE

NOTE: LEGEND RELATES TO APARTMENTS OR PUBLIC AREAS ONLY.
DWELLINGS HAVE AVAILABLE SPACE IN REAR GARDENS FOR
BICYCLE STORAGE

REFUSE STORAGE LOCATIONS

- PRIVATE COVERED BIN STORAGE
- COMMUNAL COVERED BIN STORAGE

NOTE: LEGEND RELATES TO APARTMENTS AND DWELLINGS
WITH NO SIDE ACCESS ONLY.
PINK SYMBOL IS EXAGGERATED SCALE ON PLAN FOR
CLARITY ON DRAWING.
DWELLINGS WITH SIDE ACCESS HAVE AVAILABLE SPACE IN
REAR GARDENS FOR REFUSE STORAGE

Notes:
1. This drawing is for the purpose of the stage indicated only. - If in doubt ask.
2. Do not scale, figured dimensions only to be taken.
3. Engineer/Architect to be informed of any discrepancies before work proceeds.
4. Contractor to check all dimensions and conditions on site before commencing works.
5. Drawing to be read in conjunction with current Building Regulations.
6. All components and materials to be installed fully in accordance with manufacturers instructions.

Rev	Date	Description	Drawn	Chkd
A	09-10-2023	ISSUED FOR PLANNING APPLICATION	JB	BOK/GF
B	27-02-2024	ISSUED FOR FURTHER INFORMATION	SM	BOK/GF

BRIAN O KENNEDY & ASSOCIATES LTD
ENGINEERS ARCHITECTS

Shannon House,
Church Road,
Douglas,
Co. Cork

Tel: 021-4899854
Fax: 021-4899854
Email: info@bok.ie
Web: www.bok.ie

ENGINEERING | ARCHITECTURE | ASSIGNED CERTIFIERS
CIRP CERTIFICATES | DAC | PRDP | CONSERVATION

GENERAL NOTE:
This drawing is the property of Brian O'Kennedy & Associates.
Copyright is reserved. The drawing shall not be copied, reproduced or
otherwise used without the consent of Brian O'Kennedy & Associates.

Drawing Status: LRD PLANNING APPLICATION	
Client:	CASTLE ROCK HOMES MIDLETON LTD.
Project:	RESIDENTIAL DEVELOPMENT - BROOMFIELD MIDLETON
Drawing:	PROPOSED PART SITE LAYOUT PLAN NORTHERN - PARKING AND REFUSE
Date:	14-09-23
Scale:	1:500 @ A1
Drawing number:	22/6732-P-1112
Rev:	B
Drawn:	JB
Chkd:	GF

CastleRock Homes